

# Repair of asymmetric lever switching

## Opening of the clock

Unscrew all 6 screws on the bottom of the clock and remove the bottom

Open the bottom of the clock

You may have to squeeze the sides in order to remove the bottom from the top.

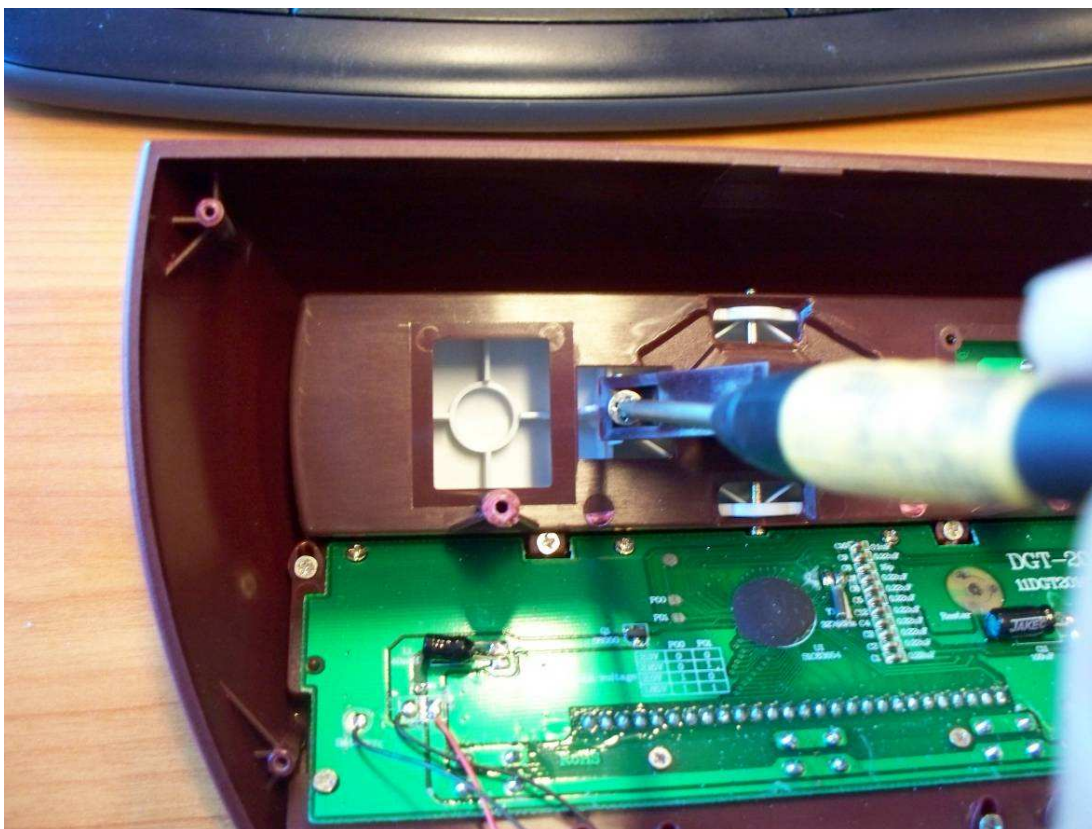
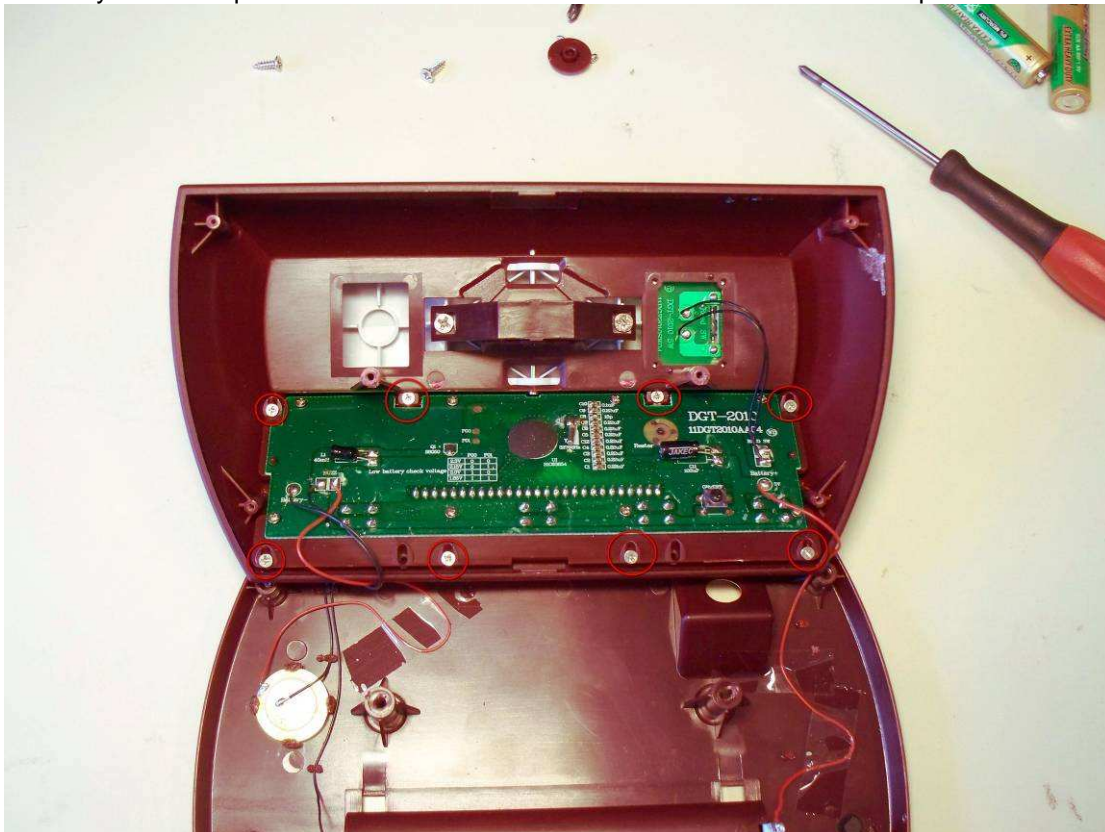


Foto 1 loosen the screw on one side of the lever

## Functional test

Put in two 1,5 V AA batteries in the clock. (the clock will switch on automatically)

In rare cases the clock will not switch on even if all wires are connected correctly. If this is the case use a flat screw driver to connect the two pads of the "reset" connector. (the red circle in **Fout! Verwijzingsbron niet gevonden.**)

Push the on/off switch on the bottom to switch it off

Hold the ✓ button and switch the clock on again, while holding this ✓ button.

You will see a display test

Check if all segments work properly

Wait until you see Foto 3



Foto 2 Display test

Push the start/stop button once and listen if you hear a beep. (Foto 4 **Fout! Verwijzingsbron niet gevonden.**), If you don't hear any sound, than check all the wiring between bottom plate and upper part.

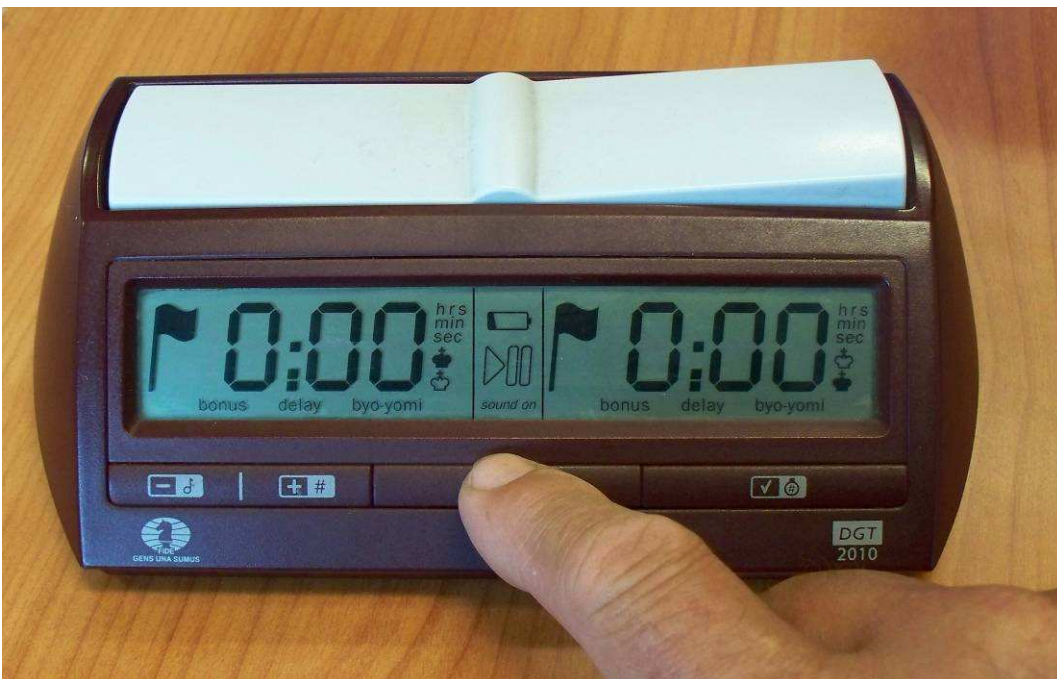


Foto 3 push the middle button

You will see a number that indicates the voltage that is set for "low battery" indication





**Foto 4 the "low battery" voltage**

Push all buttons one after another once and check if the number in the display changes.  
Also switch the lever once or twice.  
Put extra attention on the numbers when moving the lever.



**Foto 5 The numbers that indicate the lever position**

If you have seen all numbers from 1 to 6, the clock is OK and can be packed again.